

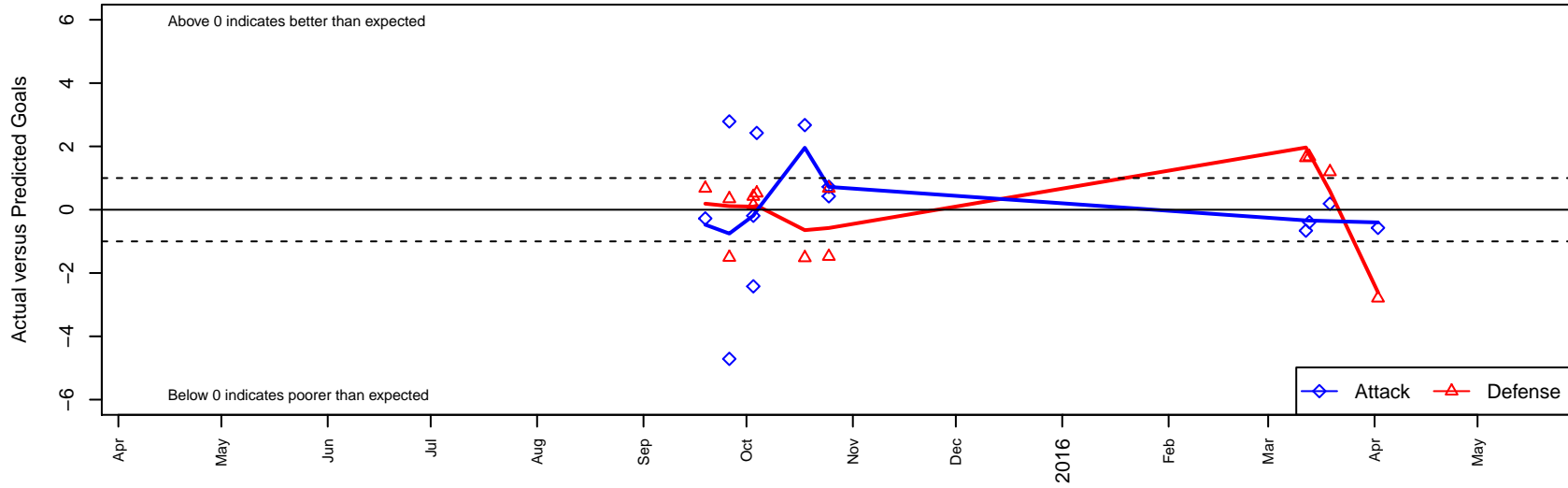
SSC Shadow Solo G04

Spokane SC Shadow
 Spokane, WA
 G04 total strength=399
 attack=0.29 defense=0.21
 fall league = NWL Group 1 U11, NWL Group 2

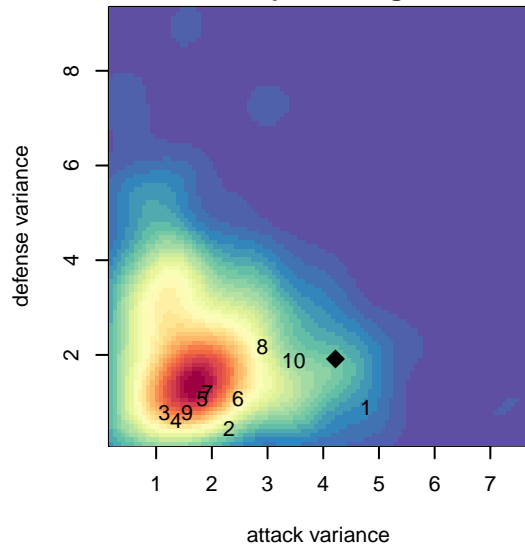
alt names used:
 SSC SHADOW G04 – SOLO
 SSC SHADOW G04 – SOLO
 SSC Shadow G04–Solo

Venues played:
 2015 NWL Group 2 U11
 2015 NWL Group 1 U11
 2015 WYS Presidents Cup G04 Division 2

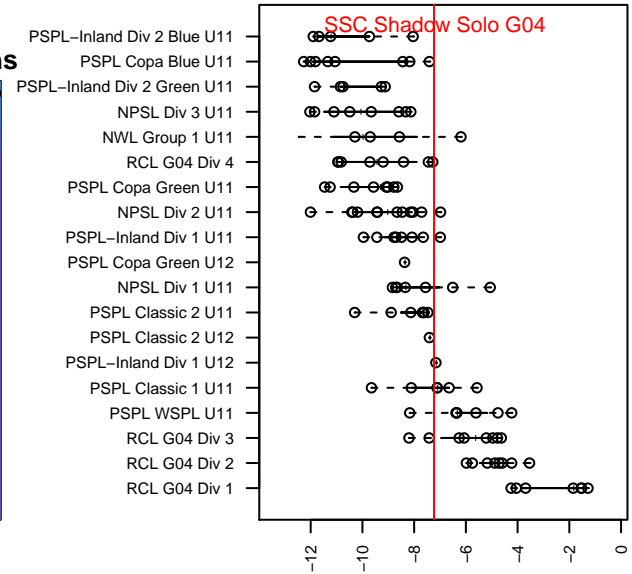
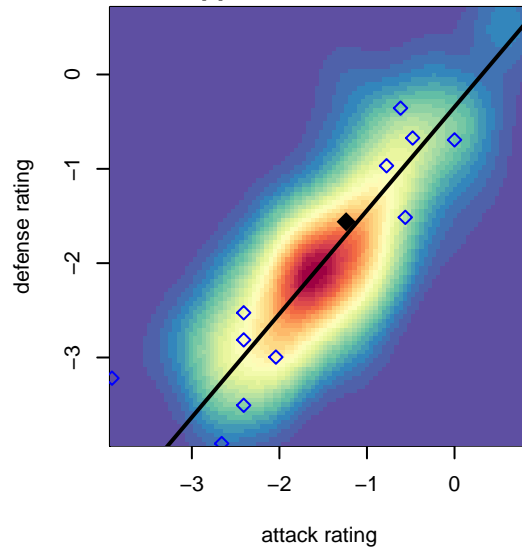
SSC Shadow Solo G04
 Dots are actual minus expected GF (blue circles) and GA (red triangles).
 Blue line is smoothed change in attack strength. Red is smoothed change in defense strength.



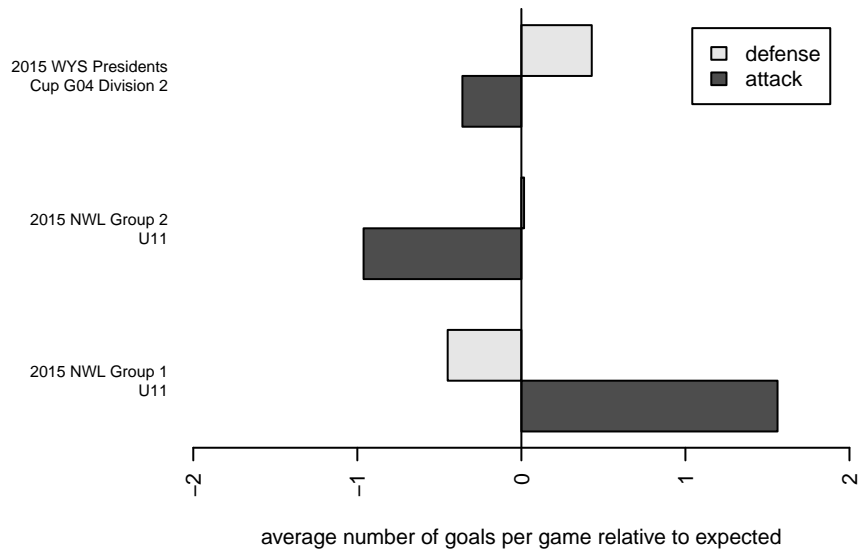
**attack and defense variance (black dot)
relative to other teams
and top 10 in region**



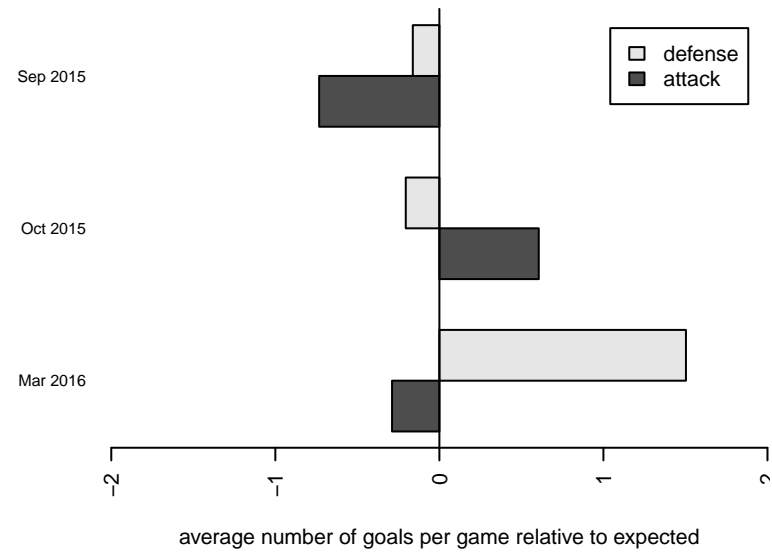
**attack and defense rating
relative to others at age
and all opponents in last 13 months**



Performance relative to 13 month average



Performance relative to 13 month average



| date | home | | away | | venue | pred.home | pred.away |
|-------------|------------------------------------|---|------------------------------------|---|--|------------------|------------------|
| 2016-04-02 | SSC Shadow Solo G04 | 0 | Kitsap Alliance Red G04 | 6 | 2015 WYS Presidents Cup G04 Division 2 | 0.57 | 3.21 |
| 2016-03-19 | SSC Shadow Solo G04 | 1 | Harbor Premier Green G04 | 1 | 2015 WYS Presidents Cup G04 Division 2 | 0.81 | 2.20 |
| 2016-03-13 | WA Rush G04 | 1 | SSC Shadow Solo G04 | 0 | 2015 WYS Presidents Cup G04 Division 2 | 2.67 | 0.39 |
| 2016-03-12 | Eastside FC White G04 | 3 | SSC Shadow Solo G04 | 0 | 2015 WYS Presidents Cup G04 Division 2 | 4.64 | 0.66 |
| 2015-10-25 | Three Rivers SC Black District G04 | 2 | SSC Shadow Solo G04 | 5 | 2015 NWL Group 1 U11 | 0.52 | 4.58 |
| 2015-10-25 | Three Rivers SC Green District G04 | 0 | SSC Shadow Solo G04 | 7 | 2015 NWL Group 1 U11 | 0.68 | 6.28 |
| 2015-10-18 | SSC Shadow Rapinoe G04 | 4 | SSC Shadow Solo G04 | 4 | 2015 NWL Group 1 U11 | 2.48 | 1.33 |
| 2015-10-04 | SSC Shadow Solo G04 | 7 | Three Rivers SC Black District G04 | 0 | 2015 NWL Group 1 U11 | 4.58 | 0.52 |
| 2015-10-03 | SSC Shadow Solo G04 | 7 | SSC Shadow Elite Dobson G04 | 0 | 2015 NWL Group 2 U11 | 9.42 | 0.42 |
| 2015-10-03 | SSC Shadow Solo G04 | 7 | Sandpoint Strikers G04 | 0 | 2015 NWL Group 2 U11 | 7.19 | 0.15 |
| 2015-09-26 | SSC Shadow United Dickson G04 | 0 | SSC Shadow Solo G04 | 7 | 2015 NWL Group 2 U11 | 0.35 | 11.71 |
| 2015-09-26 | SSC Shadow Solo G04 | 8 | Moscow United G04 | 2 | 2015 NWL Group 2 U11 | 5.21 | 0.49 |
| 2015-09-19 | SSC Shadow Solo G04 | 6 | Three Rivers SC Green District G04 | 0 | 2015 NWL Group 2 U11 | 6.28 | 0.68 |